



Craigmount
High School
aim high • adapt • succeed

S1 into S2 Pathway Planning Information Evening

January 2026

 awareness  drive  aspiration  purpose  trust



Craigmount
High School

aim high • adapt • succeed

Colin Meikle
Headteacher

 awareness  drive  aspiration  purpose  trust

Opportunities for personal achievement

Interdisciplinary learning

The Curriculum

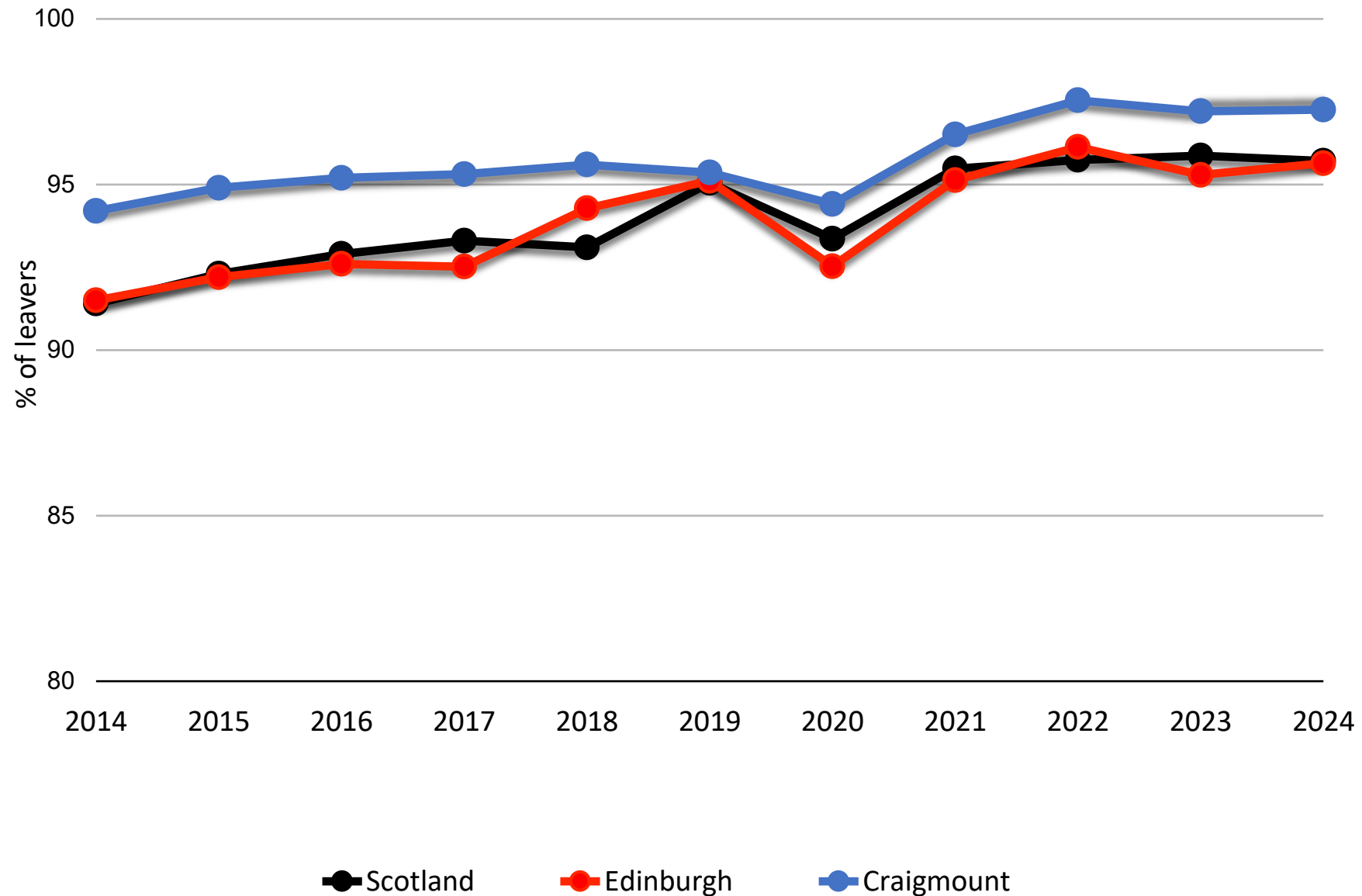
‘the totality of all that is planned for children and young people throughout their education’

Ethos and life of the school as a community

Curriculum areas and subjects

Craigmount High School

S2 Pathway Planning Information Evening



Craigmount High School

S2 Pathway Planning Information Evening





Craigmount
High School

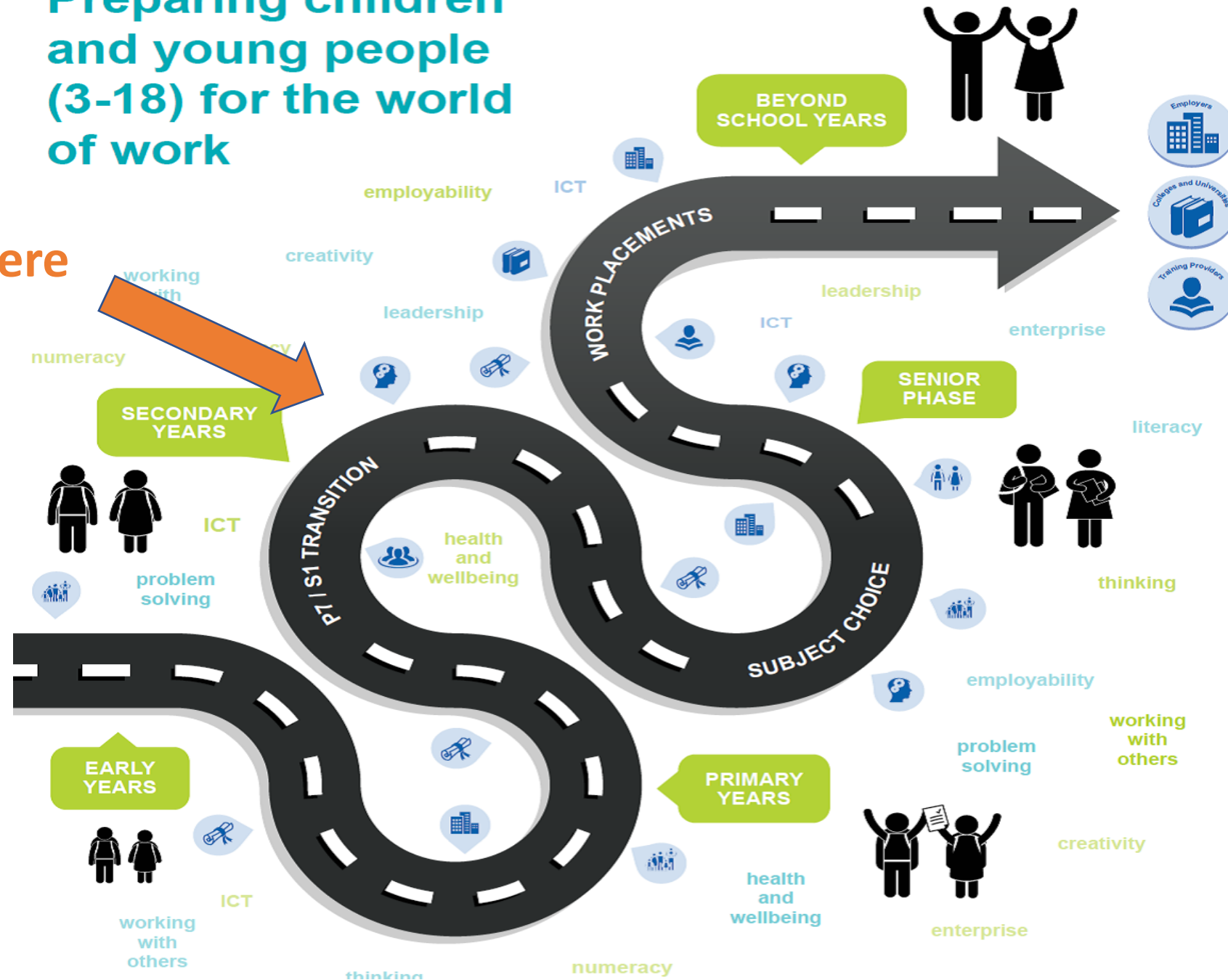
aim high • adapt • succeed

Mark Gair
Depute Headteacher

 awareness  drive  aspiration  purpose  trust

Preparing children and young people (3-18) for the world of work

We are here



Pathway Planning



WHY



WHAT



WHEN



HOW



awareness



drive



aspiration



purpose



trust

Pathway Planning



WHY

 awareness  drive  aspiration  purpose  trust

Previous S2 Timetable

	1	2	3	4	5	6	7
Monday	RMPS	Computing	Modern Studies	English	Business	PE	Music
Tuesday	Science	PE	Geography	People in Society	Languages	Maths	History
Wednesday	Maths	Maths	PE	English	FCT	CDT	Science
Thursday	PSE	Drama	English	English	Art	Languages	Languages
Friday	Science	Science	Languages	Maths			

Rationale for change



- Primary Experience
- Pupils were spending half of their week in single periods
- Pupils were being taught by 18+ teachers per week
- A range of expectations, relationships and routines
- Are pupils achieving depth in learning?
- Are pupils developing skills required for the modern world?
- Limited opportunity for personalisation
- Promoting progression in areas as they move into Senior Phase

 awareness  drive  aspiration  purpose  trust

Pathway Planning



WHAT

 awareness  drive  aspiration  purpose  trust



S2 Curriculum Structure 2026-27

- ☐ English (4)
- ☐ Maths (4)
- ☐ Humanities (4)
- ☐ Science (3)
- ☐ World Languages (3)
- ☐ Expressive Arts (2)
- ☐ Technologies (2)
- ☐ Expressive Arts, Technologies, Languages (2)
- ☐ Expressive Arts, Technologies, Languages(2)
- ☐ Project Based Learning (2)
- ☐ Physical Education (2)
- ☐ Personal Social Education (PSE) (1)
- ☐ Morality & Belief (1)

S2 Timetable 2025-26

	1	2	3	4	5	6	7
Monday	Technology	Technology	Additional 1	English	Social Subjects	PE	PSE
Tuesday	Project Learning	PE	Social Subjects	Social Subjects	Languages	Maths	RMPS
Wednesday	Maths	Maths	Additional 1	English	Additional 2	Additional 2	Science
Thursday	Expressive Arts	Expressive Arts	English	English	Project Learning	Languages	Languages
Friday	Science	Science	Social Subjects	Maths			

As a result...



- Reduction of teachers in a week from 18 to 12
 - Developing stronger relationships
 - Increase in personalisation and depth in learning
 - Promoting coherent and progressive routes towards Senior Phase
-
- Pupils will receive their full curriculum entitlement in line with Scottish Curriculum

 awareness  drive  aspiration  purpose  trust

Personalisation for S2



Craigmount High School

aim high · adapt · succeed

Explore the curricular areas below by clicking on each section down the left hand side. This will bring up further information about the opportunities to personalise the experience in this area.

**World
Languages**

**Expressive
Arts**

Technologies

**Expressive Arts,
Technologies &
World Languages
1**

**Expressive Arts,
Technologies &
World Languages
2**

Pathway Planning



WHEN

 awareness  drive  aspiration  purpose  trust

26 February

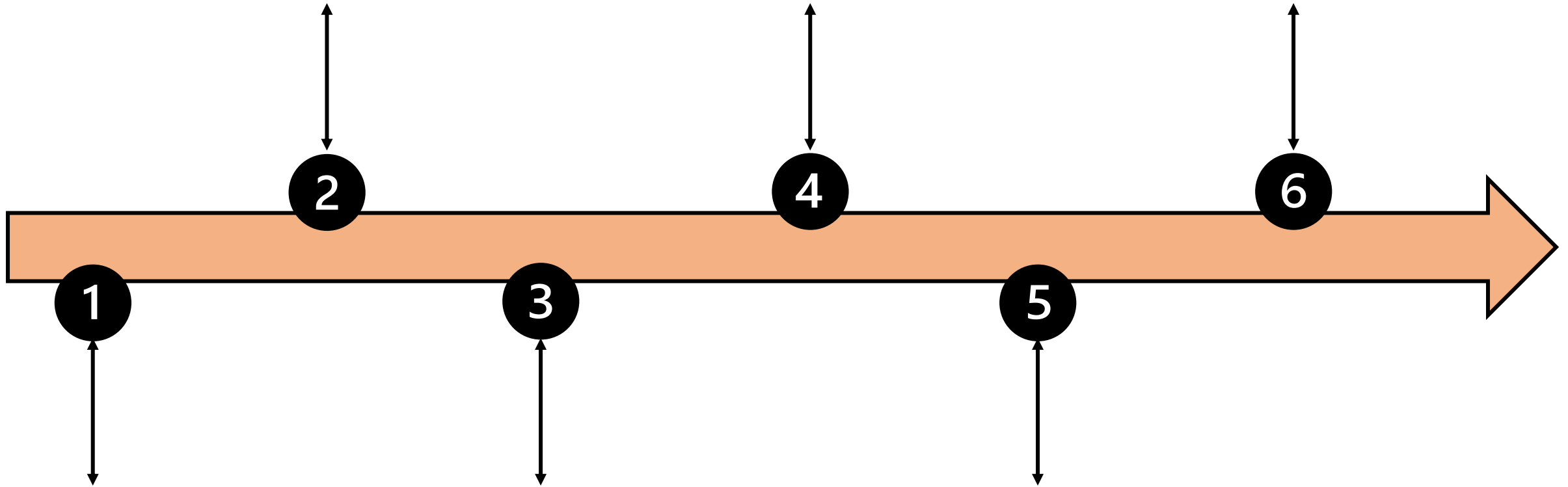
- S1 Assembly
- Process explained further

27 February

- S1 Tracking Report

Monday 1 June

- New Timetable begins



29 January

- Pathway Planning Evening
- Website updated

February into March

- Pathway Conversations in lessons
- Focussed PSE lessons

24 March – 4 April

- 1-1 conversation with PSL/Year Team
- Decisions entered into a system named TOOLS

Pathway Planning



HOW

 awareness  drive  aspiration  purpose  trust

HOW – 1-1 Personalisation Conversation



Your Option Choices



Mark.Gair@craigmount.edin.sch.uk
To: Mark Gair

If there are problems with how this message is displayed, click here to view it in a web browser.

External email >

This is an Email Confirmation from Craigmount High School
To: the Parent or Guardian of [REDACTED]

Dear Parent or Guardian,

This is to confirm that you have requested the following choices:

1=Mandarin
2=DRAMA
3=CHEMISTRY
4=MOD STUDIES
5=BUS MANAGEMENT
6=FRENCH
7=PHIL & MORAL
R=MUSIC

Please speak with your pupil first and only reply if there is an issue.

- We capture the pathway planning information on a web programme called TOOLS.
- Parent/Carer will receive an automated e-mail which will confirm the decisions a pupil has made.
- A letter will be sent just before the start of the pathway planning conversations start, which will outline more details on the codes and abbreviations.

5.30pm – 5.40pm

Introduction from the Headteacher

5.40pm – 5.55pm

Overview of the S2 Curriculum and Key Information

6.00pm – 6.20pm

Rotation 1

6.25pm – 6.45pm

Rotation 2

	6.00pm – 6.20pm	6.25pm – 6.45pm	Exit
Left Side	S1 Year Team Session Staff Room	Faculty Stalls with Teaching Staff Library	Library Stairs
Right Side	Faculty Stalls with Teaching Staff Library	S1 Year Team Session Staff Room	Downstairs via PE



awareness



drive



aspiration

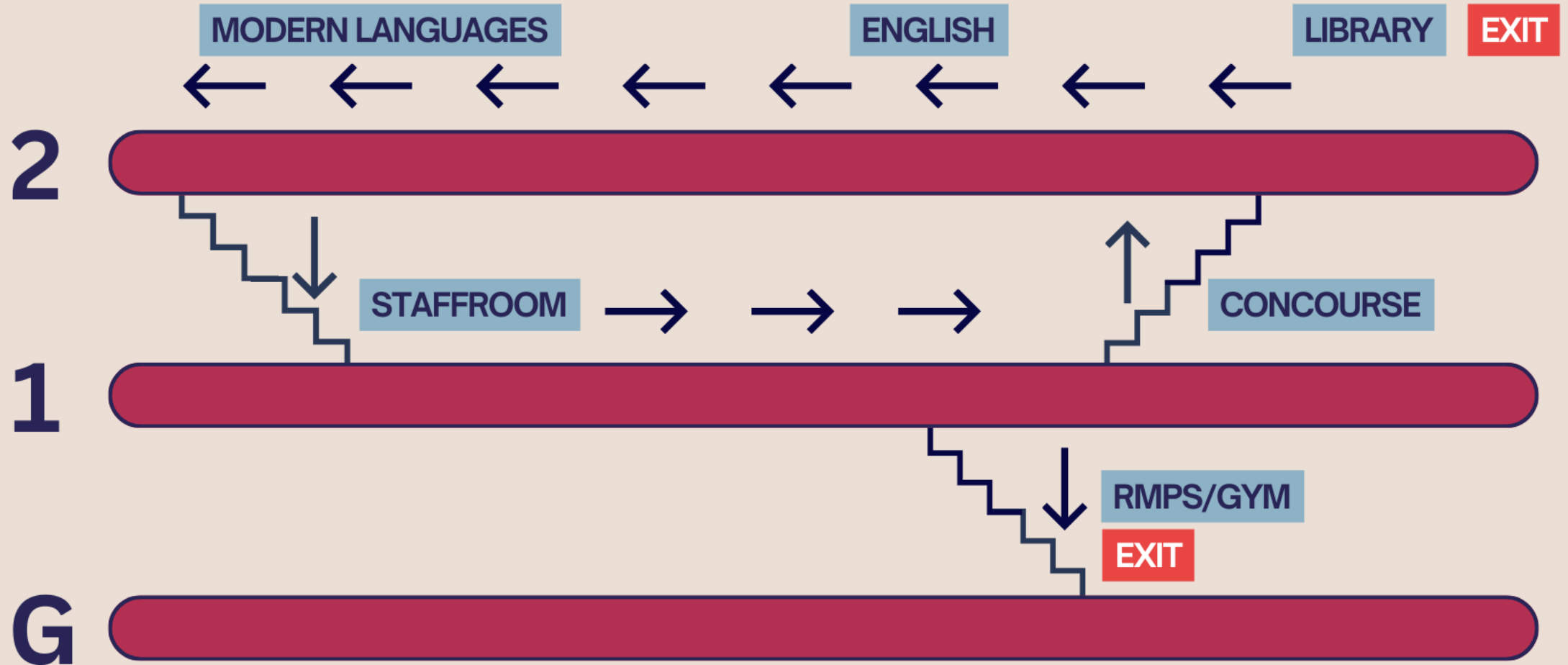


purpose



trust

S1 PATHWAY PLANNING INFORMATION EVENING



Thursday 29th January 2026

5.30pm – 5.40pm

Introduction from the Headteacher

5.40pm – 5.55pm

Overview of the S2 Curriculum and Key Information

6.00pm – 6.20pm

Rotation 1

6.25pm – 6.45pm

Rotation 2

	6.00pm – 6.20pm	6.25pm – 6.45pm	Exit
Left Side	S1 Year Team Session Staff Room	Faculty Stalls with Teaching Staff Library	Library Stairs
Right Side	Faculty Stalls with Teaching Staff Library	S1 Year Team Session Staff Room	Downstairs via RMPS



awareness



drive



aspiration



purpose



trust



Library Stalls

- ☐ English (4)
- ☐ Maths (4)
- ☐ Social Subjects (4)
- ☐ Science (3)
- ☐ World Languages (3)
- ☐ Expressive Arts (2)
- ☐ Technologies (2)
- ☐ Expressive Arts, Technologies, Languages (2)
- ☐ Expressive Arts, Technologies, Languages(2)
- ☐ Project Based Learning (2)
- ☐ Physical Education (2)
- ☐ Personal Social Education (PSE) (1) – *rota with*
- ☐ Morality & Belief (1)



Craigmount
High School
aim high • adapt • succeed

S1 into S2 Pathway Planning Information Evening

January 2026

 awareness  drive  aspiration  purpose  trust