

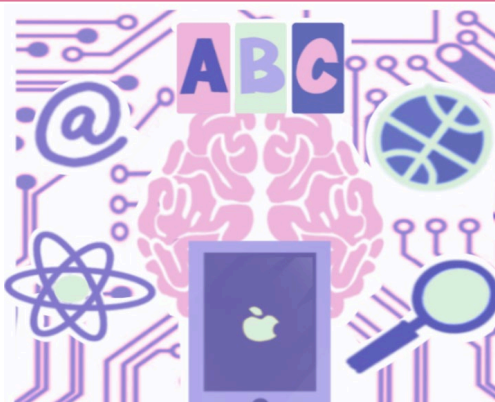
## Leadership for All

Provide opportunities for pupils and staff through collaborative leadership at all levels.



## Learning at Craigmount

Develop high quality learning and teaching which activates, builds and consolidates learning.



## Equalities

Embed an inclusive school environment which promotes diversity and develops a deeper understanding of everyone in our Craigmount community.



# Craigmount High School Improvement Plan 2023-24



Expand our range of partners to better meet the needs of all young people for learning, life and work.

## Partnerships



Focus on attainment and achievement for all pupils through rigorous tracking, use of data and interventions at all levels.

## The Craigmount Gap



Widen our pathways to support all young people to achieve their potential and progress to an appropriate positive destination.

## Curriculum

Positive Relationships

Self-Evaluation

Sustainability

Wellbeing

Attendance