

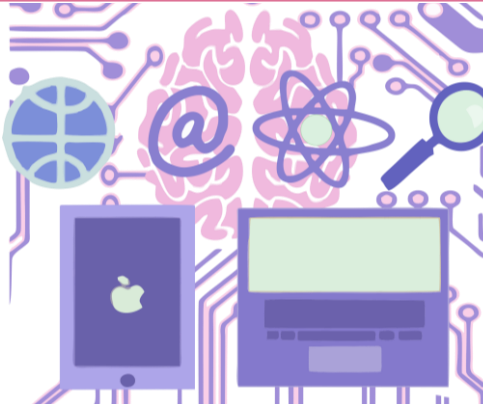
## Positive Relationships

Embed a positive culture for learning through consistent approaches to wellbeing and behaviour in all classes.



## Learning & Teaching

Support high quality learning and teaching with a focus on digital learning and differentiation.



## Equalities

Foster an inclusive school environment which promotes diversity and develops a deeper understanding of everyone in our Craigmount community.



# Craigmount High School Improvement Plan 2022-23



Provide opportunities for pupils and staff through collaborative leadership at all levels.

## Leadership for All



Focus on attainment for all pupils at all levels through rigorous tracking and faculty interventions.

## The Craigmount Gap



Review our curriculum structure, courses and pathways to support all young people to achieve their potential and progress to an appropriate positive destination.

## Curriculum Review

Wellbeing

Key Transitions

Self-Evaluation

Communication

Attendance